

# Youth & Family News!

YOUTH  
MISSION  
TRIP



## We're Indy Bound!

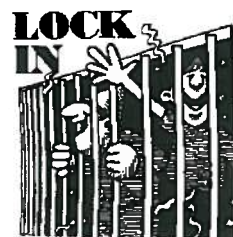
That's right! We are heading to Indianapolis Indiana **July 11<sup>th</sup> through 19<sup>th</sup> of 2011!** And plans have changed! We are NOT going with "Group" this year - **we are planning our OWN Mission Trip with the help of Cross of Grace Lutheran Church in New Palestine IN** (right outside of Indianapolis!) Why?

Instead of paying "Group" to design our trip - we are going to save that money and do it ourselves - **bringing the cost of the trip down from around \$600 per person to hopefully around \$350 per person.** (This means **EVERYONE - I mean EVERYONE, with the help of fundraising will be able to afford to go!**) Yeah! Also - **instead of having to pay a \$60 deposit IMMEDIATELY to reserve your spot - you will only need to pay a \$25 NON-REFUNDABLE deposit by the 15<sup>th</sup> of December** in order to reserve your spot in the van for next summer's adventure! Good News!

Pick up an information/Sign-up form outside Pastor Rhonda's office TODAY and get your seat in the van! You don't want to miss out on this awesome opportunity to serve, learn, and meet Christ in new and wonderful ways!

PS...The trip will include a stop in Chicago to visit the ELCA World Headquarters and hopefully a visit with Bishop Hanson! What an exciting opportunity!

NEW  
YEAR'S  
EVE



Come ring in the NEW YEAR -  
Well almost - at our New Year's  
Eve EVE Lock-In on

Thursday December 30<sup>th</sup>  
From  
8pm to 6am

Join us at the Cornerstone - and bring all your friends - as we say goodbye to 2010 and celebrate what 2011 will bring. There will be plenty of fun activities planned in the open space upstairs...including games, movies, and DJ Tim will help us dance the night away! Hey - Did I mention party hats???

Who can come?

- ALL 6<sup>th</sup> - 12<sup>th</sup> Graders AND their friends!

Admission to this fantastic event?

- \$5 without a non-perishable food item.
- \$3 WITH a non-perishable food item.





"We put our hope in the Lord  
He is our help and our shield."  
Psalm 33:20

## It's Time! It's Time!

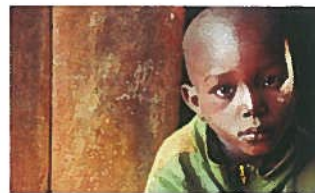
It's time to register for the annual trek to WI Dells for the Youth Encounter Quake/Zone at the Chula Vista Resort and Water park!

The Quake/Zone starts on Friday evening March 4<sup>th</sup> and ends on Sunday morning March 6<sup>th</sup>.

We are thinking about either leaving early Friday (like 6am) or Thursday after school - both options would mean missing school on Friday...but we will wait until everyone is registered and take a parental vote for that decision to be made. The reason behind the decision would be so that we would be able to get our "fun" done so we can take a more "active" role in the Quake/Zone itself making it a more meaningful experience for everyone. For the past several years we have missed the opening night activities due to our drive.

Cost for the Quake/Zone this year is \$180 per person with a **\$50 NON-REFUNDABLE deposit due by January 5<sup>th</sup>, 2011.**

- Balance of \$130 can be paid in installments or all at once by the due date of **February 20<sup>th</sup>, 2011.**
- Cost covers the Quake/Zone itself, Hotel, transportation to and from WI Dells, Chaperones, Breakfast food (i.e., pop tarts, cereal, juice, milk, etc...), Pizza one night for dinner, and Water park access while at the resort. (some extra money will be needed and will be explained in detail at a later date.)
- We will do at least one fundraiser for the Quake/Zone - AND scholarships will be available - talk to Pastor Rhonda if money is the only issue keeping you from going on this amazing adventure with us!



World Vision's



# Wanna Make A HOUR FAMINE Difference?

Hey all you 6<sup>th</sup> - 12<sup>th</sup> Graders and Adult Volunteers!  
Mark your calendars for the weekend **BEFORE** the Quake/Zone (Feb. 25<sup>th</sup> and 26<sup>th</sup>) for a **FANTASTIC** event that might just change your life.

We will be taking part in the NATIONAL World Vision 30 Hour Famine Event in order to raise money to fight hunger in the most impoverished parts of the world.

Our efforts will include:

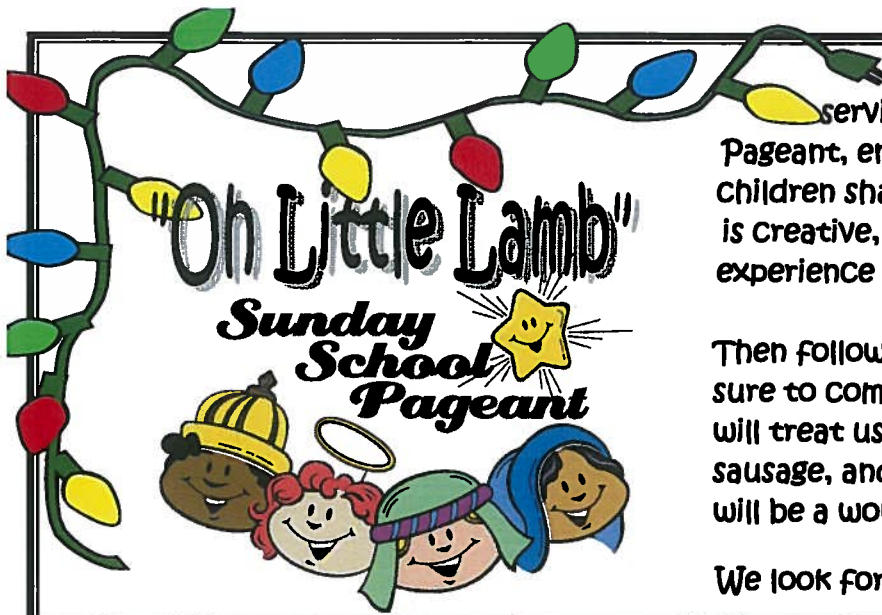
- **A fast** (juice only - don't worry if you have a medical concern we can accommodate....and if you think you can't - you CAN....I have done it... and if I can - you can!)
- **A Lock-In** that night in order to support each other in our fast - and to experience some great lessons and have some wonderful fun surrounding a survival game called TRIBE allowing us to learn and experience more about world hunger.
- **A shift at Feed My Starving Children** during our Lock-In as a servant event - along with another servant event during our time together.
- **A goal of raising over \$1000** to designate to World Hunger 30 Hour Famine in the weeks leading up to our Famine Event to stand in solidarity with those



who go to bed hungry every night and with those who will be taking part in the famine all over the country those two days.

So watch for our **organizational meeting to come soon**, take a look at the posters that will be sharing more information with you in the days ahead, and when you are ready - **sign up on the big board in the hall and take a stand to make a difference with this life changing event - life changing for those you will feed - and for YOU!**





Join us on Sunday December 19<sup>th</sup> at 2<sup>nd</sup> service (10:30am) for our annual Sunday School Pageant, entitled "Oh Little Lamb". Come watch as our children share the gospel of Jesus' birth in a way that is creative, fun, and full of the Holy Spirit! Come, experience the Birth of the Lamb!

Then following our worship/pageant experience, make sure to come to the fellowship hall where the Squares will treat us to a fantabulous breakfast of eggs, sausage, and pancakes! What a great ending to what will be a wonderful morning!

We look forward to seeing ALL of you there!

Thank You!  
THANK YOU!

A huge THANK YOU to all of those who donated

candy, decked out their trunks, volunteered their time, or who just came to hang out at "Trunk or Treat" this Halloween! It was a GREAT success with 214 ghosts and goblins, princesses and superheroes coming through to "get their treat on!"

Next year is already in the works with a revised time of 5-7 instead of 5-8, with food to be offered inside, and a bungee cord for Pastor Matt to help him find his way back to his car.



Thank you all for help in making this outreach event such a great success!

## Sunday School Pageant Rehearsal Schedule



- **Sunday December 5<sup>th</sup>** - After the 1 Live Nativity Worship we will rehearse **at 10am** in the cornerstone.
- **Sunday December 12<sup>th</sup>** - During Sunday School Hour from 9:15am - 9:45am.
- **Saturday December 18<sup>th</sup> - 9am - 11am.** (Dress Rehearsal)
- **Sunday December 19<sup>th</sup> - PAGEANT DAY -** **be at church at 9:15am.** (we will run through - then sit kids down with a movie and snack before the pageant starts.

WE'RE  
WE  
STAND

## CONFIRMATION NEWS!

Just a couple notes to all your confirmation families to keep you up to date on what's happening.

The year has started with a bang! Sometimes we don't know what end is up things are going so fast...so here are the highlights of what's happened and what's coming up!

- ✓ We have started slowly studying the Old Testament going through the major stories and characters of the Book of Genesis - talking about some of the great patriarchs and matriarchs of our faith.
- ✓ We have already served once at Feed My Starving Children and have a date set for December 8<sup>th</sup> from **6pm-7:30pm as well.** This will be our Holiday Service Project and we will **need DRIVERS** (Adults willing to drive AND help at the site) for that night. So if you are available to meet at the church around 5pm - please let me know asap.
- ✓ We will be having a Nativity Event on Wednesday Dec. 15<sup>th</sup>! We need time together as a class to celebrate while we do something meaningful! 6pm! Don't be late!



- ✓ **NO CONFIRMATION WED. DEC. 22<sup>ND</sup>!**

**What a GREAT start to the year** - hectic as it may sometimes have seemed...**A BIG thank you to our mentors and parents for being so flexible and so awesome!** We have a great group and I look forward to Wednesday nights with joy each week!



## From the

Happy Advent Everyone! As you hustle and bustle over the next few weeks – I pray you will take some time for what Advent is intended – which is **opposite of the rushing** we tend to do this time of year – and that is **waiting**. Take a moment to **STOP** – to **BREATHE** – to **ANTICIPATE** – to **PREPARE** – and to **WAIT**...**center your hearts and minds** on this baby – the Christ Child we celebrate at Christmas. Blessings to ALL of you! (Especially my “kids”!)

## Why Jesus is Better Than Santa!

Santa lives at the North Pole.  
**JESUS is everywhere.**

Santa rides in a sleigh.  
**JESUS walks on the water.**

Santa comes but once a year.  
**JESUS is an ever present help.**

Santa fills your stockings with goodies.  
**JESUS supplies all your needs.**

Santa comes down your chimney uninvited.  
**JESUS knocks, and then enters your heart.**

You have to wait in line to see Santa.  
**JESUS is as close as the mention of His name**

Santa lets you sit on his lap.  
**JESUS lets you rest in His arms.**

Santa doesn't know your name, all he can say is "Hi little boy or girl, what's your name?".  
**JESUS knew our name before we did...He even knows how many hairs are on our heads.**

Santa has a belly like a bowl full of jelly.  
**JESUS has a heart full of love.**

All Santa can offer is HO HO HO.  
**JESUS offers health, help and hope.**

While Santa says "You better not cry".  
**JESUS says "Cast all your cares on me for I care for you."**

Santa's little helpers make toys.  
**JESUS makes new life.**

While Santa puts gifts under your tree.  
**JESUS became our gift and died on the tree.**



It's obvious there is really no comparison.  
**Jesus is still the reason...**  
*Author Unknown*



## HERE'S THE SCOOP...



Wednesday nights have been exciting around the church – could have something to do with the **herd** of high schoolers hanging out each week! Here is YOUR invitation to join us if you haven't already! And here is what's comin' up...

- \* **Dec. 1st:** Let's meet at the Anderson's Christmas Tree Farm, down the road, for a field trip to pick out the sanctuary Christmas tree and for a lesson about the nativity! **7pm at the Andersons - 27727 Zuni St. NW Isanti. (Cross 47 about a mile or so)**
- \* **Dec. 8th:** I have 10 spots for high schoolers who would like to join us to go to Feed My Starving Children. The first 10 to sign up with me will get the spots – others can sign up and be put on a waiting list and go if the first ten cancel. **The shift is from 6-7:30. We will leave at 5pm and return around 8pm.**



## \* **Dec. 15th: It's a WHITE ELEPHANT GIFT PARTY!**



If you've never been to one – it's hilarious!

- Everyone needs to bring a **GIFT** – it can be something you find at your house or something you buy... but if you buy it – **it cannot cost over \$5**

**(Think about the cool cheesy things you already have at your house – I bet there is something there already!)** The point of a “White Elephant” gift is to exchange something funny, tacky, or cheesy that you would LOVE for *someone else* to treasure forever! (Like that singing fish that goes on the wall or the Christmas sweater grandma Ethel got for you that has light-up reindeer on it!)

- Everyone needs to **bring the GIFT WRAPPED!** Make sure it's wrapped so that **NOBODY KNOWS WHAT IT IS THAT YOU BROUGHT!**
- **KEEP IT A SECRET!!!!**
- Gift Exchange – White Elephant Party – Will start **promptly at 7:15pm**...after we get the party treats and gifts all set up – **if you are not here to draw a number – you won't get to play!!!** (No present for you...)
- **Dec. 22nd: No H.S. Youth Group...Merry Christmas – see you at the Lock-In! (And Christmas Worship!)**





# Poinsettias for Christmas!

Help us to celebrate the birth of a Savior this Christmas by purchasing a Poinsettia in Honor or in Memory of someone special in your life.

The Poinsettias will be purchased through **Nelsons Romantic Garden by Shelly Roman** and will be delivered the Sunday before Christmas to help make our worship experience even more special.

Either fill out the order form below or fill out an order form in worship and **return it with your payment to the box in the narthex marked "FLOWERS" by December 12<sup>th</sup>**. (Final orders will be placed on Monday the 13<sup>th</sup>) The names of the loved ones being honored and remembered will be listed in the Christmas Eve and Christmas Day Bulletins.

Name: \_\_\_\_\_

Phone: \_\_\_\_\_

# of RED Poinsettias \_\_\_\_\_ x \$18 = \_\_\_\_\_

# of WHITE Poinsettias \_\_\_\_\_ x \$18 = \_\_\_\_\_

# of PINK Poinsettias \_\_\_\_\_ x \$18 = \_\_\_\_\_

**TOTAL = \$** \_\_\_\_\_

Given by \_\_\_\_\_ in  
*honor/memory of* \_\_\_\_\_

Given by \_\_\_\_\_ in  
*honor/memory of* \_\_\_\_\_

Given by \_\_\_\_\_ in  
*honor/memory of* \_\_\_\_\_

**Make sure to put both your order form AND payment in the box marked "flowers" or return to the church office by DEC. 12<sup>th</sup>.**



# Time to Get your BINGO on!

Get your quarters ready and mark your calendars! **Bingo is back** and it just wouldn't be the same without you and your family there to enjoy dinner and several rounds of Bingo and Prizes!

**The 2011 Mission Crew** invite you to a fantastic evening of food, fun, fellowship, and prizes!

**When:** Friday January 14<sup>th</sup> – 5:30pm to 8pm

**Where:** Our very own fellowship hall

**What:** Mexican Haystack Dinner (Yum...kinda like tacos!) followed by Bingo with prizes for EVERY Bingo!

**Who: EVERYONE is welcome.** Ages 3 to 103 will find this event to be fun. There are prizes for EVERYONE! Bring your family – bring your neighbors – bring your grandkids and grandparents – and bring all your friends.

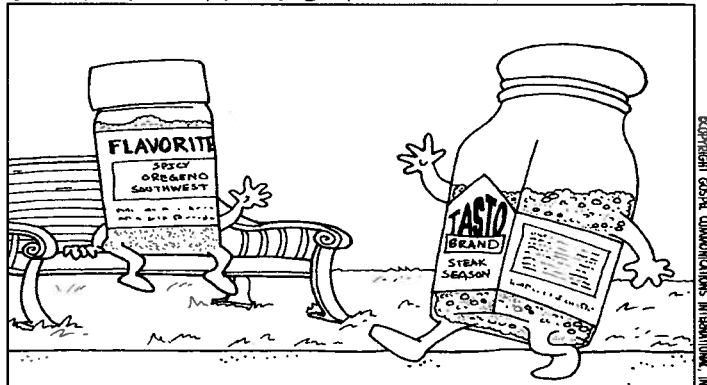
**Cost:** No cost for dinner (we will accept a free will donation). Bingo is 25¢ per card, per game.

You don't want to miss a **GREAT Friday night** out in the middle of a cold MN winter in a **nice WARM place with nice WARM people!** So come and let us **feed you – entertain you – and even reward you!**

**We hope to see all of you there!**



**REVEREND FUN** [WWW.REVERENDFUN.COM](http://WWW.REVERENDFUN.COM)



SEASONS GREETINGS



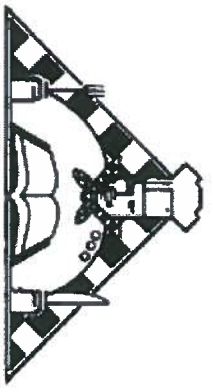
# The Long Lake Youth are Proud to Announce the 2011 Long Lake Lutheran Cookbook!



Yes – It's time to get out your favorite and your best recipes to share with the rest of us.

## We want your recipes for...

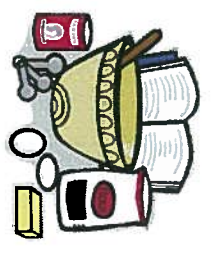
Hot dishes, Salads, Meatballs, Beverages, Bars, Cookies, Main Dishes, and whatever else YOU like to whip up in the kitchen!



But NOT only do we want your recipes – We want the Stories behind them! Make sure to write down a few sentences about where

they come from, why they are important, who gave them to you, or what makes them significant! We hope to make this NOT only a Cookbook – but a Book about us, our community and its history.

**Submissions are open to everyone** and can be made by simply filling out the form that is on the back of this page and turning it into Pastor Rhonda or into the box in the Narthex marked **COOKBOOK!** For those of you who have more than one recipe (which is many of you) more copies of this form can be found either online or in the narthex of the church. Feel free to fill out as many as you like. (But note that duplicate recipes will NOT be printed twice...instead will simply be printed once with more than one name attached to it.)



**Submissions will be due January 15<sup>th</sup>** with the hope of a publish date by Easter! Yippee! All proceeds will go toward the Youth of Long Lake Lutheran Church who will be working toward the publishing of the book itself. We thank you in advance for your support and look forward to your recipes and stories!

## INSTRUCTIONS

- TYPE OR PRINT CLEARLY IN INK, NOT PENCIL, AND PLACE ONLY ONE RECIPE PER FORM.
- If more room is needed, use another sheet of the same size and staple together.
- List all ingredients in order of use in ingredients list and directions.
- Include container sizes, e.g., 16-oz. pkg., 24-oz. can.
- Keep directions in paragraph form \_ not in steps.
- Use names of ingredients in the directions, e.g., "Combine flour and sugar."
- DO NOT use statements like, "Combine first three ingredients."
- Include temperatures and cooking, chilling, baking, and/or freezing times.
- Be consistent with the spelling of your name for each recipe you contribute.
- Your recipes should fit into the following categories:

- |                          |                |
|--------------------------|----------------|
| Appetizers & Beverages   | Soups & Salads |
| Vegetables & Side Dishes | Main Dishes    |
| Breads & Rolls           | Desserts       |
| Cookies & Candy          | This & That    |



FOLLOW INSTRUCTIONS ON BACK

# RECIPE COLLECTION SHEET

For office use only

Recipe No.

Category

Recipe Title

Submitted By

**INGREDIENTS:** Use abbreviations: pt. qt. pkg. env. c. tsp. T. oz. lb. gal. doz. sm. med. lg.

\_\_\_\_\_

\_\_\_\_\_

\_\_\_\_\_

\_\_\_\_\_

\_\_\_\_\_

\_\_\_\_\_

\_\_\_\_\_

\_\_\_\_\_

\_\_\_\_\_

\_\_\_\_\_

\_\_\_\_\_

\_\_\_\_\_

\_\_\_\_\_

\_\_\_\_\_

\_\_\_\_\_

\_\_\_\_\_

\_\_\_\_\_

\_\_\_\_\_

\_\_\_\_\_

\_\_\_\_\_

\_\_\_\_\_

\_\_\_\_\_

\_\_\_\_\_

**DIRECTIONS:**

\_\_\_\_\_

\_\_\_\_\_

\_\_\_\_\_

\_\_\_\_\_

\_\_\_\_\_

\_\_\_\_\_

\_\_\_\_\_

\_\_\_\_\_

\_\_\_\_\_

\_\_\_\_\_

\_\_\_\_\_

\_\_\_\_\_

\_\_\_\_\_

\_\_\_\_\_

\_\_\_\_\_

\_\_\_\_\_

\_\_\_\_\_

\_\_\_\_\_

\_\_\_\_\_

\_\_\_\_\_

\_\_\_\_\_

\_\_\_\_\_



FOLLOW INSTRUCTIONS ON BACK

# RECIPE COLLECTION SHEET

For office use only

Recipe No.

Category

Recipe Title

Submitted By

**INGREDIENTS:** Use abbreviations: pt. qt. pkg. env. c. tsp. T. oz. lb. gal. doz. sm. med. lg.

\_\_\_\_\_

\_\_\_\_\_

\_\_\_\_\_

\_\_\_\_\_

\_\_\_\_\_

\_\_\_\_\_

\_\_\_\_\_

\_\_\_\_\_

\_\_\_\_\_

\_\_\_\_\_

\_\_\_\_\_

\_\_\_\_\_

\_\_\_\_\_

\_\_\_\_\_

\_\_\_\_\_

\_\_\_\_\_

\_\_\_\_\_

\_\_\_\_\_

\_\_\_\_\_

\_\_\_\_\_

\_\_\_\_\_

\_\_\_\_\_

**DIRECTIONS:**

\_\_\_\_\_

\_\_\_\_\_

\_\_\_\_\_

\_\_\_\_\_

\_\_\_\_\_

\_\_\_\_\_

\_\_\_\_\_

\_\_\_\_\_

\_\_\_\_\_

\_\_\_\_\_

\_\_\_\_\_

\_\_\_\_\_

\_\_\_\_\_

\_\_\_\_\_

\_\_\_\_\_

\_\_\_\_\_

\_\_\_\_\_

\_\_\_\_\_

\_\_\_\_\_

\_\_\_\_\_

\_\_\_\_\_

\_\_\_\_\_