

---

# THE COUNTRY SPIRE

---

Volume 33 issue 4

April, 2008

---



## SPRING CLEANUP & RECYCLING DAY

Sat., April 19, 2008~8 a.m. to Noon???

It's that time of year again and it seems this it's been a long time a comin'! With the addition of a sprinkler system the Property Team has plans to spread more seed and fertilizer but the lawn should be raked first. *Pastor Rhonda has graciously volunteered to rake the lawn. Oh, sorry, I meant she has graciously volunteered the Youth to rake the lawn.* So bring rakes, yard tools and a helpful spirit.

This year we are also having a recycling drive which will take place the same day. Every time I stop in at Clarence's Recycling he reminds me of all the money that could be raised for the Church simply from donations of recyclables. Aluminum cans aren't the only things that are worth money. I'll bet many of us have things we don't even realize we have and probably should get rid of.

As we do our own spring cleaning at home keep an eye peeled for things like old aluminum pots and pans, car batteries, radiators, old electric motors and even extension cords just to name a few. A more extensive list will be posted at Church.

Recycling Day is one of the first in a series of events to be held once a month to enhance the Capital Campaign voted on at the Annual Meeting. Other things being planned are dinners, such as a fish fry in May. The proceeds from these events along with the capital campaign will go towards paying down the mortgage as well as providing more opportunities for fellowship.

As I'm writing this in mid March some of the specifics for recycling day have yet to be ironed out so check the bulletins and the narthex for further details.

In His Service,  
Steve Vigstol, Property Chair

### **BIBLE VERSE FOR APRIL**

**Titus 2:11**

11 For the grace of God has appeared, bringing salvation to all,\*



### Bell Committee

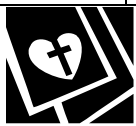
The first meeting of the newly formed Bell and Cross Committee will be held on Saturday, April 12, 2008 at 8:00 am at the Creamery Crossing Café in Isanti.

A good breakfast and some fellowship will be a good start as we tackle this somewhat sensitive issue. Any problems or conflicts with this date and time, please call me at home 763-753-0177 or on my cell at 763-360-1798.

Sincerely, Steve Vigstol, Committee Chair

### **Inside This Issue**

F.Cover	Spring Cleanup/Recycle, Bible V, Bell Com
2	Pastor Howard 's Column
3	Council/Committee Reports, Council Pres.
4	LLC Directory and Thank You's
5	Stained Glass Windows, Time & Talent
6	Parish Nurse & LLC Happenings
7	Circles & Square Groups
	No Youth News
	No Youth News
8	Food For Thought, Finance, Live Nativity Mtg.
9	Birth., Bapt. & Ann. in Apr. & P. Acts in Mar.
10	Volunteers for April
11	April Calendar
BCover	It's April!



# FROM THE PASTOR

April, 2008

Dear Members, Friends, and Community Members of Long Lake Lutheran Church,

In a small pamphlet, entitled “WHAT IN THE WORLD ARE WE DOING”, Gerhard Frost writes about our Christian calling. He notes in a piece entitled “Soggy Cereal and Tepid Tea, wonderful insights that we all can use.

“When I remember that I am a parent, and think of God as Father, I recall a special breakfast in bed.

We awoke early to the sound of hurrying feet.  
We wondered what they were up to, our four- and eight-year olds,  
But soon it came----breakfast in bed.

It was an elaborate menu: chilled burnt toast, with peanut butter; eggs, fried and chilled too; soggy cereal, (the milk had been added to soon)  
And tepid tea!

A horrendous mix.  
When they stepped out for a moment to get something they had forgotten (heaven forbid).  
My wife whispered, “You’re going to have to eat this, I can’t!” And I did.

I didn’t eat as a gourmet, for it wasn’t gourmet cooking:  
I didn’t even eat as a hungry person for I wasn’t hungry.

I ate as a father because it was made for me.  
I was expected to; they had faith in me.  
And I ate because it was served on eager feet and with starry eyes.

I think of my poor service to God as teacher, parent and as Christian. Interpreter of the Good News.  
I know that my offerings are soggy, tepid, and unfit, but my Father receives them---  
Not because I am good, but because He is!

## From Bless My Growing

When we live in God’s daily gift of forgiveness, we discover that wrapped into the gift, is a task. What is that task? We are to be people who work and serve side by side in faith, hope and love. We are to

be a witnessing community that shows kindness, commitment, and generous giving. Let us be His hands, His feet, and His body to a broken and sinful world. As we note, there will never be a need for an Unemployment Office in God’s kingdom of grace, for our service is endless to love one another. We as Disciples of Christ are to work and service together so His mission may be proclaimed. As we explored during Lent, the marks of discipleship, I hope many heard the call to focus on discipleship including prayer, study of the Bible, worship, encouragement, outreach, generous giving, and service. That was my hope for this church as we began our Easter season.

## THIS AND THAT

1. At our annual meeting, we made a commitment to a Capital Campaign that is in house and will include a focus on our mortgage of \$700,000 and how we can lower it significantly. Our mortgage payment for each month is about \$6,500. And to uplift our commitment to the ongoing commitments to mission and ministry with our General fund. The church council will begin that process in April and in May.
2. Thank you to the choir and their commitment to enriching our worship. We appreciate their time of rehearsal along with Donna Larsen and Kristy Anderson’s leadership.
3. Thank you to the youth ministry team that put on the Easter Breakfast. I was impressed with all who volunteered to make it happen. It was a lot of work. I would like to thank each person who dedicated time in that effort.
4. **REMEMBER TO REMAIN COMMITTED TO WEEKLY WORSHIP IN THE SUNDAYS AND WEEKS AHEAD.**

In closing, let us remember, Come, Come! Be little Christs to our neighbors! We all need to hear and extend the invitation of Christ’s love and the gift He offers; The Promise of Hope and Forgiveness and New Life in Him.

In Christ’s service,

Pastor Howard



## LONG LAKE LUTHERAN CHURCH COUNCIL MIINUTES March 13, 2008

John Bartz called the meeting to order at 7:05 pm. Pastor Howard read devotions. In God we trust. The master calendar for April was reviewed. Spire articles due by March 15<sup>th</sup>. Council Reps: 8:00 am~Steve & 10:15~am Dale.

Treasurer's/Finance Report: (Matt Hysten) We are \$10,000.00 behind in General Fund giving and \$2,000.00 behind in Building Fund giving. We are working with the gift card account.

Sr. Pastor's Report: Copy of check register to Matt, Pastor and John. We had to replace compressor and pump for heating system. Ten children for First Communion.

Assoc. Pastor's Report: Workcamp is going to the BWCA, they will be staying in cabins and will have some fun while up there. It will cost about \$250.00 each. Easter Breakfast is under control. There are 21 children going to camp. We will have a mystery lock-in April 25<sup>th</sup>. A group is going down to "Feed My Starving Children."

Youth Report: (Tina Anderson) No Report.

Property Report: (Steve Vigstol) Clean up day is April 19<sup>th</sup>. We are looking to do a recycling day.

Missions Report: (Dale Findell) Missions for the Month are set up. Kendra Lynn to go to Germany

for the Synod. We will have a noisy offering for her.

Worship Report: (Candy McColley) We are looking for somebody to play the piano on Wednesday nights. We will be moving the piano and organ.

Stewardship: (Tony Steiner) He is working on the capital campaign.

Congregational Life: (Rose Hass) Soup Suppers are going good. We will have soup and salad for Maundy Thursday.

Education: (Monica Ahlman) We will no longer be doing rotation Sunday School. It is a lot of work and children are not learning how to use the Bible. The children will be singing for Easter. Children are also getting Bible homework.

Old Business: Monica and Candy went to the Healthy Leadership meeting. There was a class on the call process. If you focus on mission at your church, things fall into place. Candy was elected vice-chair.

New Business: Capital Campaign, looking at doing something every month. Examples: Waffle Feed, Game Feed, Recycling Day, Steak Fry, Meatball Dinner, Craft Fair, a one time pledge. Mary Martin the Parish Nurse was at a meeting and is looking at doing a Health Fair. The question was brought up about background checks on people that go places with youth.

Meeting adjourned at 8:47 pm.

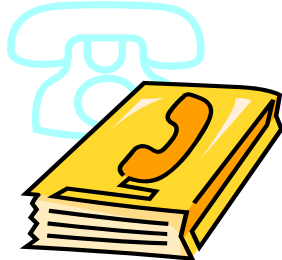
Respectfully Submitted,  
Rose Hass, Council Secretary

### A Note from the Council President

Greetings, I hope all of you had a very blessed Easter. At our Annual Meeting in February it was voted on and approved to have a in house capital campaign. There are two things that have happened since. First our Council has put together some ideas on how we can have a successful campaign over the next couple of years. Secondly we have asked some people in our congregation to serve on our campaign task force and to those people, thank you. We have a meeting scheduled for Wed. April 2, at 6:30 which will finalize the first phase of the campaign and then probably meet quarterly as we add fundraising ideas and events to the campaign. For

example, you might have heard in Church about our clean up and recycling day where the proceeds will go to the capital campaign. The Dinners we have had in the past were very successful and hopefully we could do some more of them with proceeds for the campaign, our goal is to have something every month that could help us with our campaign. Our goal is to kick off our campaign May 1. There will be more information coming over the month of April to all of you about our campaign. I hope and pray you will all join me in making this a successful mission for LLLC. I welcome your ideas and suggestions. 763-444-9731.

In Christ, John Bartz



## LONG LAKE LUTHERAN CHURCH

3921 277<sup>th</sup> Ave. NW – Isanti, MN 55040

Website: [www.longlakeluth.org](http://www.longlakeluth.org)

### Staff

Pastor Howard Skulstad 763-213-1136  
 E-mail address [hskulstad@longlakeluth.org](mailto:hskulstad@longlakeluth.org)  
 Pastor Howard Cell Phone 612-232-8875  
 Pastor Rhonda Hlavinka 763-783-3625  
 E-mail Address [rhondah@longlakeluth.org](mailto:rhondah@longlakeluth.org)  
 Pastor Rhonda Cell Phone 763-229-4459  
 Church Office 444-5315

### Church Office

FAX Machine 444-8066  
 Geri Fournier,  
 Financial Coordinator & Secretary 444-0279  
 Lynn Perrin, Custodian 444-5607  
 Kristy Anderson, Organist  
 Mary Martin, Parish Nurse 763-226-7286

### Council Members

John Bartz, Chairperson 444-9731  
 Steve Vigstol, Property 753-0177  
 Matt Hylen, Finance 753-2149  
 Rose Hass, Congregational Life 444-5892  
 Monica Ahlman, Education 444-6462  
 Tony Steiner, Stewardship 444-6768  
 Candy McColley, Worship & Music 753-5187  
 Tina Anderson, Youth 612-747-6871  
 Dale Findell, Missions 689-2219

### Church Organizations

Rose Hass, Council Secretary 444-5892  
 Donna Larsen, Director Adult Choir 444-9975  
 Friends of Ruth, June Huges 689-3174  
 Women of the ELCA (WELCA):  
     Jean Hansen 444-5447  
 Serving Groups Coordinator  
     Loretta Fornberg 444-5973  
 Sunshine Circle:  
     Loretta Fornberg 444-5973  
     Betty Stanius 689-5405  
 Lundeen Scholarship Committee &  
 Cemetery Sexton: Philip Lundeen 444-5357



Dear Members of Long Lake Lutheran,

Thank you so much to everyone who has been praying and sending me lovely cards! I really don't know how I would've gotten through the last few months without it. I have a few more months of chemotherapy and radiation and then I should be "home free"! God is so good and does answer prayers.

In Christ,

Angie McColley



Dear Members of Long Lake Lutheran,

Thank you for your generous donation to the flood recovery. Efforts are well underway with the Fellowship Hall being carpeted this week.

Many Blessings Your Way,  
 Rushford Lutheran Church



Dear Members of Long Lake Lutheran,

Thank you very much for your generous and faithful support! In the Gospel of John 1:16 it says, "From the fullness of His grace we have all received one blessing after another." Luther Point has been greatly blessed and we in turn are able to be a blessing to others.

A special word of thanks to you for being a part of that blessing on Luther Point Bible Camp!

Sincerely,

Rev. Craig Corbin



Dear Members of Long Lake Lutheran,

We would like to thank you and especially all involved in IHN, for feeding and housing us. I want to tell you that your

church was the most enjoyable and comfortable yet. We enjoyed everyone's company and wish we could have gotten to know you all better. Maybe down the road that might happen. We hope so. We have sent many applications out and are on quite a few waiting lists. We have faith something will happen soon. To help give back, New Pathways has asked me to speak at a celebrate function Feb. 24<sup>th</sup> in Cambridge. Maybe I'll see some of you there. So for my family, thank you all for everything you have done for us.

Sincerely,

Tom, Lisa, Nicole and Savannah Stoker

P.S. Say Hi to Will & Marty for us!



## New Stained Glass

Last month we shared with you the origins of our original stained glass windows and how much they meant to our family. We discovered many people shared our view. The beauty of stained glass adds so much to our worship service. The scenes depicting God's love for us, as well as symbols of our Christian faith and the Lutheran tradition serves to condition our minds and hearts to the worship of God.

The response to this project has been terrific. By the time you read this, Mr. Horcher probably has installed some-if not all-of the six side windows in our sanctuary. We are planning to light all the windows which should add to our evening services and activities at church.

We have six side windows in the sanctuary and seven families want to have memorials. So we are looking at doing a couple more windows. The two large arched windows in the back of the sanctuary (the ones on each side of the large middle window with the cross) would cost about \$1,500 a piece. This sounds like a very daunting prospect. However, we have surmounted challenging projects in the past and when we have worked together as a congregation, we have always managed to meet them. This is an opportunity to memorialize a loved one or a family, reminding the next generation of those who made this their church home or rest in the cemetery next door. It is a living legacy of beauty for those who come after us.

You don't need to finance a whole window by yourself. Any amount is appreciated and your name will be acknowledged. The six families who have purchased side windows, thank you! We will have a brass plate attached to your window in acknowledgment. If we have several donors for a window we will see if a plaque would be more feasible.

Please put your donation in a separate envelope-include your name, envelope # and note that it is for the stained glass windows, so we can put your name on the plaque and enter the amount in your giving.

Good News! The original bid from Mr. Horcher to do the windows was \$950.00 per window. However, since we decided to do a number of them, he gave us a discount of \$50.00 per window. The committee has decided to use the remaining \$50.00 per window, to enhance each one with lighting.

Our church has endured for over a hundred years. Many people have worked very hard over the years and down to the present to make it what it is today. With God's blessing we hope to be here for another century to serve this community and make a difference in people's lives.

In God's Grace, Richard & Jean Hansen

## Time and Talent Survey

Thanks to everyone who completed a time and talent survey. They have been cataloged and distributed to the committee members chairing each of the various activities and committees. If you have not completed one, please do so and place it in the box in the Narthex.... It's never too late to share your special talents.

I wish to outline a few key points regarding the Worship Service Support schedule. Worship Service Support includes the Ushers, Lectors, Greeters, and Coffee Hosts. For those of you who give your time and talent to these ministries, please be aware of a few points.

Service schedules are created 2- 3 months in advance. While I attempt to honor all special requests and dates that you are not available, I am sure there will be times where our schedules do not align. Please make a call to another person on the schedule, and try to arrange for a swap. This is the easiest thing to do, and is much less coordination for everyone involved. If you cannot find someone, please call or e-mail me at the addresses and numbers below.

Two years ago Candy McColley and Karen Baker (along with several others I am sure) created a single page of basic notes that will help anyone who has not done one of the support functions before. Instruction sheets for Ushers, Greeters, and Lectors are located in the sound room. Detailed instructions for coffee hosts are posted on the wall in the kitchen. If you feel you need additional help, or would like someone to work with you for a couple of times, please don't hesitate to give a call.

And finally, there may be times where you are scheduled for several service opportunities in the same month, or even on the same Sunday. We have two different "schools of thought" .... some people like to serve during the same day or same service,

while others would rather spread it out over the year. My point here is, that we use a simple rotation system, and because most of our lists are in alphabetic order, you may find yourself serving in several positions at the beginning, but not again for quite a long time. Or the reverse may occur. I hope you will remain flexible, but feel free to make me aware of situations that will make it easier for you to participate. Again - e-mail below as needed.

With the exception of the Coffee Hosts and Lecture at the Late Service, we have enough volunteers to allow for a good rotation. We are still looking for help in those areas.

Thank you again for returning the gift of time and talent graciously given.

Blessings, Donna Larsen



### **Notes from the Parish Nurse**

We have just finished celebrating Easter and it is now springtime. Both Easter and spring offer us a promise of new life. Our eternal life is promised to us through the Cross. We are not always as sure of our physical health and life. With the coming of spring though, there are things we can all do to try and improve or retain our health. We can also help others to work on their health goals. Improving our health does not have to be complicated. As the snow and ice melt it will be easier for us to be outside, enjoying the first signs of spring. It is a perfect time to start walking. If walking is too strenuous for you, find an activity that still gets you moving. This could be doing light yard work or gardening, or even filling up the birdfeeders around your house.

The parish nurse program is starting up two new programs in April aimed at personal health. We will be starting up a walking club through the church. The goal is to get people to walk/exercise with a buddy to encourage each other. We will be offering incentives to people to meet their personal health/exercise goals. There will be an informational meeting on Sunday April 20 between services for anyone interested in this exercise club.

Another program the parish nurse is setting up is the Health Ministry Team. The aim of this team is to find the health needs/concerns of the congregation. They will then work with the parish nurse to help meet these needs. There will be an informational meeting for the health ministry team on Sunday

April 27 between services. Anyone interested in this ministry is welcome. You do not need to be a health care professional in order to be a part of this team. We are looking for people of all ages to join. Who knows, you may have an idea that no one else has thought of. Remember, don't hide your light under a basket, instead, let it shine! For example, a parishioner recently suggested that I include a healthy recipe each month in the Spire. I only wish that I had thought of it! However, I need your help in order to make that happen. If you have any heart healthy or diabetic friendly recipes that you like, please share them with us. You can either email me your recipes or put them on the parish nurse desk in the mail room. The recipes that are not able to go in the Spire will be printed and available in the Fellowship Hall.

Please contact the Parish nurse with any concerns you may have, or if you have a healthy recipe to share. My email is [marymartin@goldengate.net](mailto:marymartin@goldengate.net) and my cell phone is 763-226-7286.

In Christ's peace,  
Mary Martin, RN, Parish Nurse

Following is a heart healthy recipe from the American Heart Association.

### **Baked Chicken and Rice with Herbs**

#### **INGREDIENTS:**

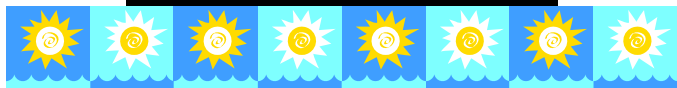
2 whole medium chicken breasts, halved lengthwise (1 lb. total), skinned & all visible fat removed  
1 5-oz. package brown & wild rice or long-grain & wild rice  
1½ cups water  
1 9-10 oz. package frozen, no-salt-added peas  
¼ cup dry white wine or water  
¾ tsp. dried Italian seasoning

#### **DIRECTIONS:**

Preheat oven to 350 degrees F.  
Rinse chicken breasts, pat dry and set aside.  
In a 2-quart glass baking dish, combine rice and water. Discard seasoning packet that came with rice. Stir in remaining ingredients and arrange chicken on top. Cover and bake about 1 hour or until chicken and rice are tender.  
Serves 4; ½ chicken breast per serving.

In Christ's Peace,  
Mary Martin, RN, Parish Nurse

## LLLC Happenings:



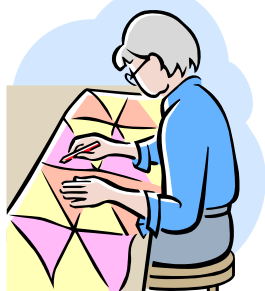
**April 12<sup>th</sup>**-Bell Committee Meeting at Creamery Crossing 8:00 am.

**April 15<sup>th</sup>**-New Member Class 7-8:00 pm.

**April 13<sup>th</sup>-20<sup>th</sup>**-We are hosting IHN.

**April 20<sup>th</sup>**-Walking Club Mtg. 9-10:00 am.

**April 27<sup>th</sup>**-Health Ministry Mtg 9-10:00 am.



### **Sunshine Circle's Project of Interest:**

Sunshine Circle has started a new project of making prayer shawls for the Harbor Room at Cambridge Hospital, which supports cancer patients.

If anyone would like to knit or crochet these at home, they can bring them in to church and put them in the Sunshine box in the Narthex. We will then tag them with Long Lake Lutheran Church tags and deliver them to the Harbor Room when we receive a good quantity of them.

We meet every second Tuesday of each month at 1:00 p.m. Our next meeting will be Tuesday, April 8<sup>th</sup>. Come join us.

"Two can accomplish more than twice as much as one, for the results can be much better." *Ecclesiastes 4:9*

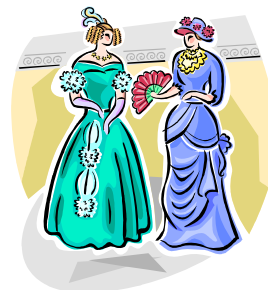
Thank you,  
Sunshine Circle



### **WELCA**

All the church women are invited to join us at our WELCA (Women of the Evangelical Lutheran Church of America) monthly meeting on April 17<sup>th</sup> at 1:00 pm.

## **CIRCLES & GROUPS**



### **FRIENDS OF RUTH**

We have left winter behind us and are now well into spring. What a perfect time for us to hear about the "Seasons of Life." That is the theme of this year's Women's Luncheon, hosted by Friends of Ruth. We invite all ladies of the church to join us on Saturday April 5 from 10 a.m. to Noon for a time of fellowship, food/beverages and story telling.

Our speaker this year is Theresa Nelson. We will be having a catered lunch, and will also hear some special music provided by Pastor Rhonda. We encourage all the ladies to invite their moms/daughters/nieces or friends to join us. The cost of the event is \$10 per person. Registration forms are located in the Narthex. We are also looking for vintage clothing/hats/dress forms/photos

and other vintage items to display during the luncheon. We promise to take good care of them and return them to you as soon as the lunch is over. You can leave your items on the parish nurse desk in the mail room. Please have them to the church by March 30. Just be sure to have your name and phone number with your item.

The next Friends of Ruth meeting will be Thursday April 3 at 7 p.m. We will be setting up for the luncheon on Saturday. Please contact Mary Martin at 753-5796 or June Huge at 689-3174 if you have any questions.

In Christ's peace,  
Friends of Ruth

## **FOOD FOR THOUGHT**

### **GOD'S VOICE MAIL SERVICE**

Most of us have now learned to live with voice mail as a necessary part of our daily lives. But have you ever wondered what it would be like if God decided to install voice mail? Imagine praying and hearing the following:

Thank you for calling Heaven.

For English, press 1

For Spanish, press 2

For all other languages, press 0

Please select one of the following options:

Press 1 for requests

Press 2 for thanksgiving

Press 3 for complaints

Press 4 for all other inquiries

I am sorry all of our Angels and Saints are busying helping sinners right now. However, your prayer is important to us and we will answer it in the order in which it was received. Please stay on the line.

If you would like to speak to . . .

The Father, press 1

The Son, press 2

The Holy Spirit, press 3

If you would like to hear King David sing a Psalm while you are holding, press 4.

To find a loved one that has been assigned to Heaven, press 5, then enter his or her social security number, followed by the pound # sign. (If you receive a negative response, please hang up and try area 666.)

For reservations at Heaven, please enter J-O-H-N, followed by 3-1-6.

For answers to nagging questions about dinosaurs, the age of the earth, life on other planets and where Noah's Ark is, please wait until you arrive.

Our computers show that you have already prayed today. Please hang up and dial again tomorrow. The office is now closed for the weekend, to observe a religious holiday. Please pray again on Monday, after 9:30 am. If you are calling after hours and need emergency assistance, please contact your local Pastor.

Have a Blessed Day!!!

**Praise God, we do not have to go through that to reach Him!!!**

**All we have to do is open our hearts and minds and pray to him. He is always there to hear us.**



### **FINANCIAL REPORT**

**Through 02/29/08**

#### **TOTAL GIVING TO DATE**

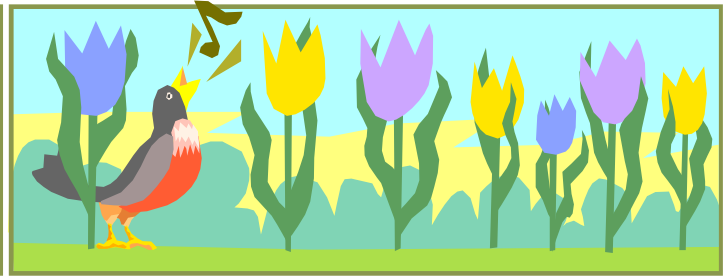
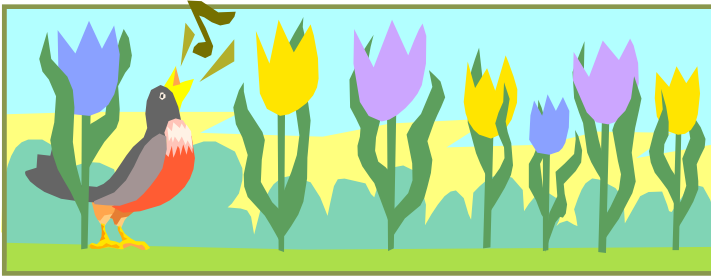
2007	\$47,407.20
2008	\$46,775.84
Gain/(Deficit)	\$ ( 631.36)



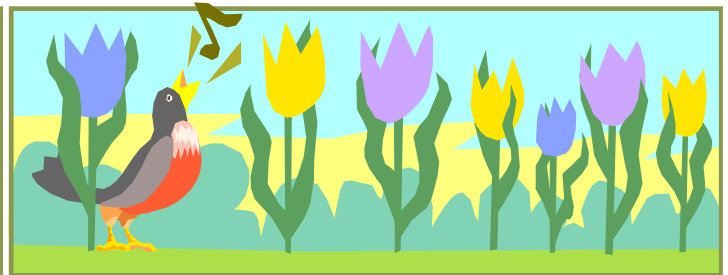
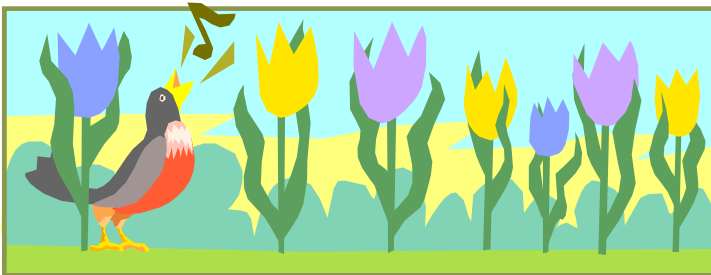
## One Night in Bethlehem

New Twist on Long Lake Lutheran's Live Nativity.

Join us April 2<sup>nd</sup> 7:30PM to learn about plans for the 2008 Live Nativity. We're moving in out of the cold in 2008 and We will need some additional planning/prep to move inside. See you in the Fellowship Hall April 2<sup>nd</sup> to learn more.



# APRIL



Long Lake Lutheran Church  
Non-Profit Organization  
3921 277<sup>th</sup> Ave NW  
Isanti, MN 55040  
Phone 763-444-5315

U.S. Postage  
PAID  
Permit NO. 5  
Isanti, Minnesota 55040

MISSION STATEMENT:  
"FOLLOWING CHRIST'S EXAMPLE

OF LOVE AND FORGIVENESS  
WE OPEN OUR HEARTS AND  
OUR DOORS TO ALL PEOPLE AS WE  
PROCLAIM THE GOSPEL AND GROW  
IN CHRIST'S LOVE.”

**ADDRESS SERVICE REQUESTED**  
**DATED MATERIAL –**  
**PLEASE EXPEDITE**